



# EAP ACKNOWLEDGEMENT FORM

## FOR RECEIPT OF THE REVISIONS TO THE EMERGENCY ACTION PLAN

**PROJECT:** White River Hydroelectric Project WI 69.12

**REVISION DATE:** October 2022

On behalf of \_\_\_\_\_, I hereby acknowledge receipt of the  
[Company / Agency Name]

revisions to the Emergency Action Plan. I further acknowledge that we are aware of our emergency action responsibilities and coordination activities in the event of an emergency condition at the above-listed hydroelectric Project.

\_\_\_\_\_  
Please Print Name and Title

\_\_\_\_\_  
Signature

\_\_\_\_\_  
Date

**Please note that we are moving to electronic distribution only, however if you would like to submit a request for hard copies, please put this request in the comments section below.**

I would like future EAP updates sent to the following email address/es:

- Send to email address: \_\_\_\_\_

- Send to email address: \_\_\_\_\_

- Send to email address: \_\_\_\_\_

Hard Copy Request and/or Comments:

\_\_\_\_\_  
\_\_\_\_\_  
\_\_\_\_\_

**Thank you for your cooperation regarding the management of public safety concerns.**  
Please email this completed form to [Chelsey.Goebel@eaglecreekre.com](mailto:Chelsey.Goebel@eaglecreekre.com)

**Lower White River Hydroelectric  
Project Field File No. 69.12WI, NID # WI00058  
Emergency Action Plan**

**Record of Reviews & Revisions**

Revision No.	Revisions	Date
1	- Complete Document Creation	April 2020
2	<ul style="list-style-type: none"> <li>- Table of Contents, page 3</li> <li>- Section A, page 4</li> <li>- Section B, page 7 &amp; Notification Flowcharts</li> <li>- Section E, page 12 &amp; 19</li> <li>- Section F, page 22 - 25</li> <li>- Section H, page 28</li> <li>- Part 2, page 38</li> <li>- Appendix D, Record of Plan Holders</li> <li>- Appendix E, page 53</li> <li>- Appendix F, page 54 &amp; 55</li> </ul>	November 2021
3	<ul style="list-style-type: none"> <li>- Section B, page 7 &amp; Notification Flowcharts</li> <li>- Section F, page 21 &amp; 23 - 25</li> <li>- Appendix D, Record of Plan Holders</li> <li>- Appendix F, Available Resources Chart</li> </ul>	October 2022

## B. Notification Flowcharts

The notification flowcharts identify who is to be notified of a dam safety incident, by whom and in what order. The information on the flowcharts is critical for the timely notification of those responsible for taking emergency actions. For ease of use during an incident, the EAP includes notification flowcharts that clearly represent this information.

There are four different conditions that warrant initiation of this EAP process and must be understood and conveyed by callers if an incident is occurring or has occurred. See Section E (EAP Response Process) for a description of each of the emergency level conditions listed below. During the notification process it is important that you specify which condition is or has occurred at the dam.

- High Flow Operations
- Non-Failure Emergency Condition
- Potential Failure Situation Developing
- Failure is Imminent or has Occurred

If your contact information listed on these emergency notification flowcharts has been listed incorrectly or has changed, please contact:

Ms. Chelsey Goebel, EAP Coordinator  
Licensee/Exemptee: Midwest Hydro, LLC  
7315 Wisconsin Avenue, Suite 1100W Bethesda, MD 20814  
Office: (920) 293-4628 ext. 346, Cell: (920) 216-7608  
Email: [chelsey.goebel@eaglecreekre.com](mailto:chelsey.goebel@eaglecreekre.com)

# WHITE RIVER HYDROELECTRIC PROJECT

STATE PROJECT #: 69.12, NID # WI00058

Licensee: Midwest Hydro, LLC Address: W7313 County YY, Wautoma, WI 54982 County: Waushara River: White River Powerhouse: (920) 293-8293

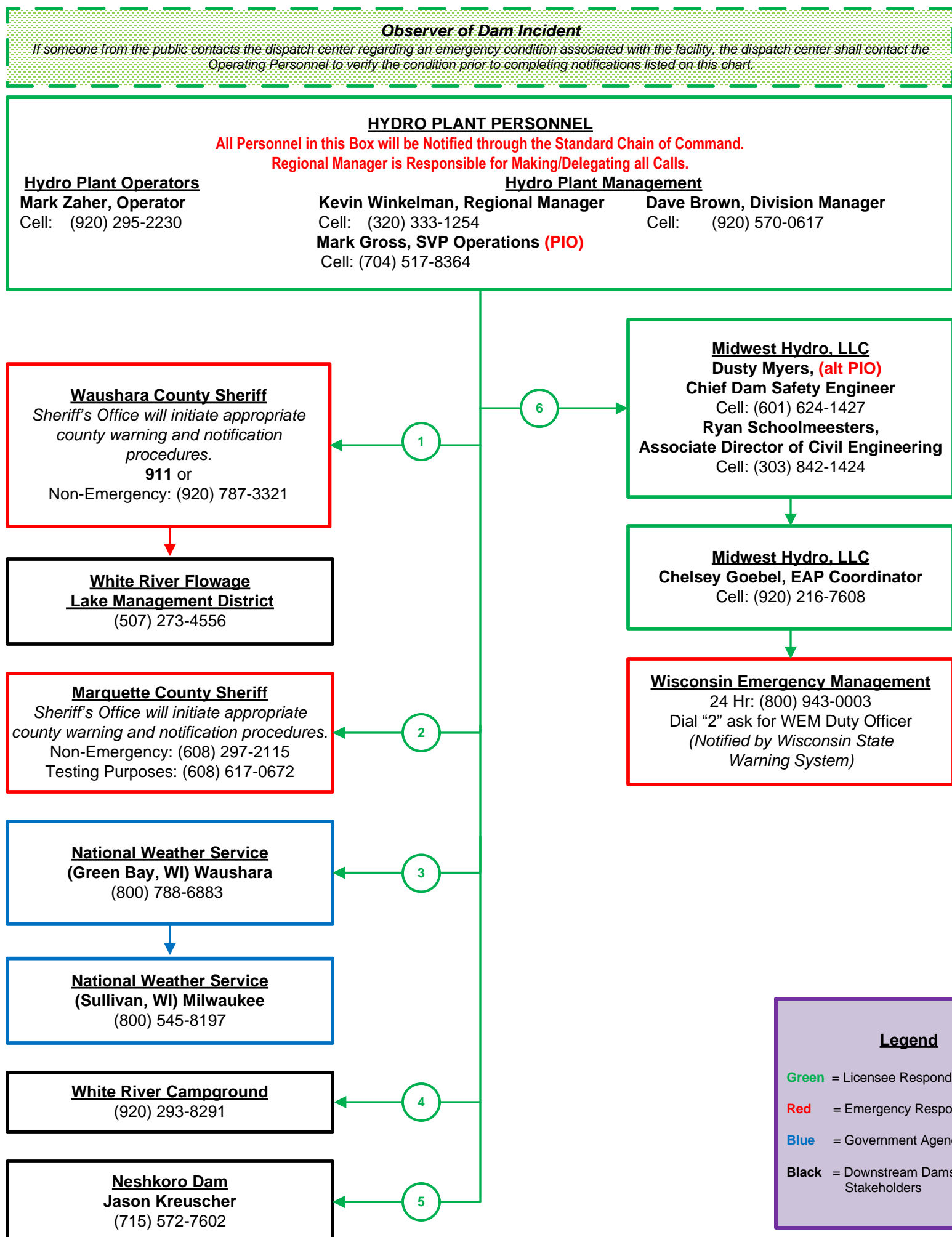
## POTENTIAL/IMMINENT FAILURE NOTIFICATION FLOWCHART

**Potential Failure Emergency Condition:** a fast-moving situation which, if not controlled, could cause failure of the dam resulting in rapid depletion of the reservoir and/or uncontrolled downstream flooding, creating a potential hazard to public health and welfare and/or structures. Time is generally available to initiate preventative action and bring the condition under control.

White River Campground upstream is advised to close and evacuate the grounds during a Potential Failure Alert.

**Imminent Failure Emergency Condition:** a situation in which time has run out and the dam is failing or will fail, resulting in rapid depletion of the reservoir and/or uncontrolled downstream flooding creating a hazard to public health and welfare and/or structures. This condition indicates that dangerous high-speed, high-volume flood waters are likely to occur in the river and flood-prone areas below the dam.

White River Campground upstream is advised to close and evacuate the grounds during an Imminent Failure Alert.



Revised: October 2022

Contains Critical Energy  
Infrastructure Information  
-Do Not Release-

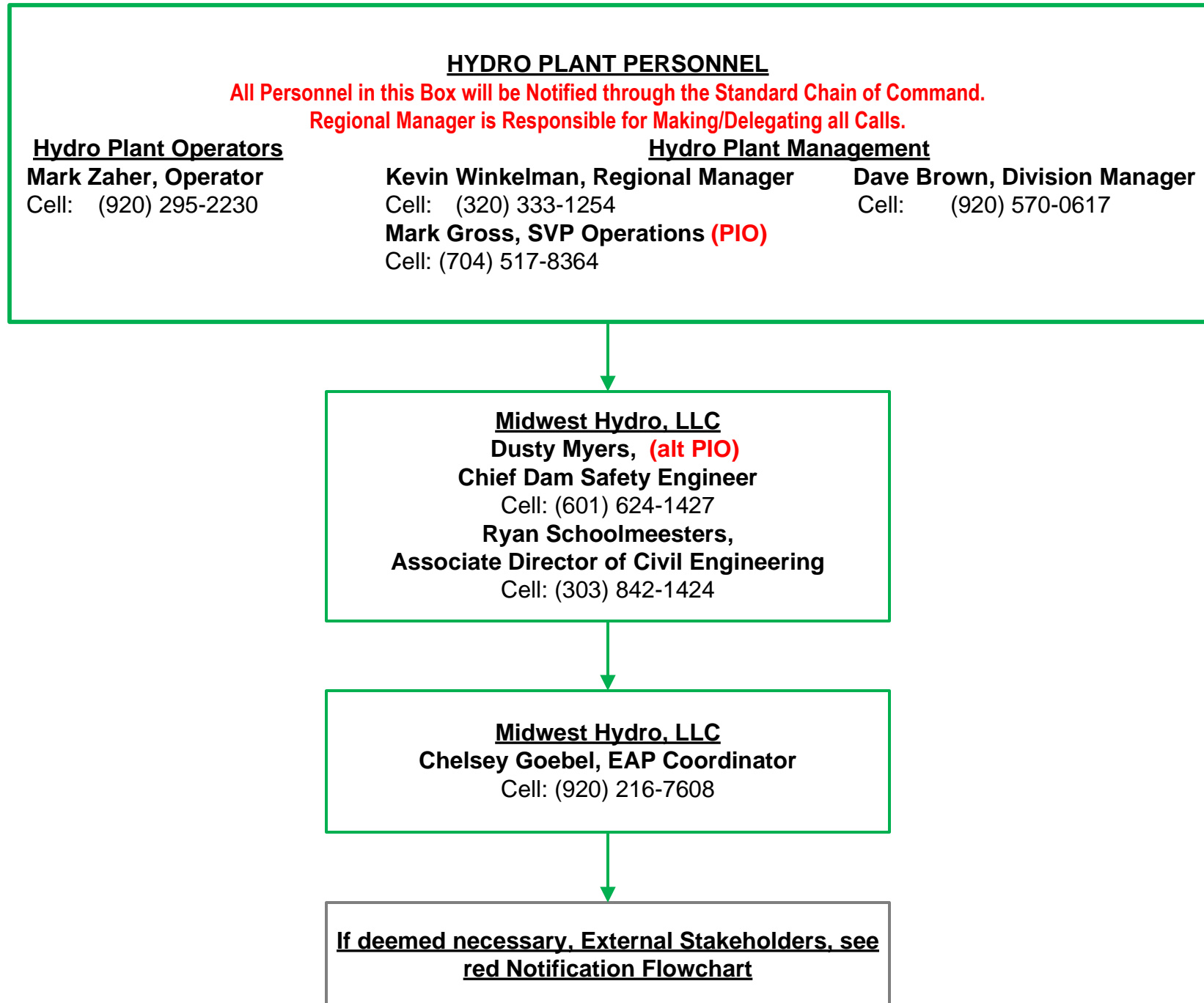
# WHITE RIVER HYDROELECTRIC PROJECT

## STATE PROJECT #: 69.12, NID # WI00058

Licensee: Midwest Hydro, LLC Address: W7313 County YY, Wautoma, WI 54982 County: Waushara River: White River Powerhouse: (920) 293-8293

### NON-FAILURE ALERT NOTIFICATION FLOWCHART

**Non-Failure Emergency Condition:** a slow-moving event at a dam that will not, by itself, lead to a failure, but requires investigation and notification of internal staff. If mitigative efforts or a worsening condition could potentially negatively affect the community, additional calls to external stakeholders may be necessary. The contacts for additional external stakeholders can be found on the red Notification Flowchart.



Revised: October 2022

Contains Critical Energy  
Infrastructure Information  
-Do Not Release-

# WHITE RIVER HYDROELECTRIC PROJECT

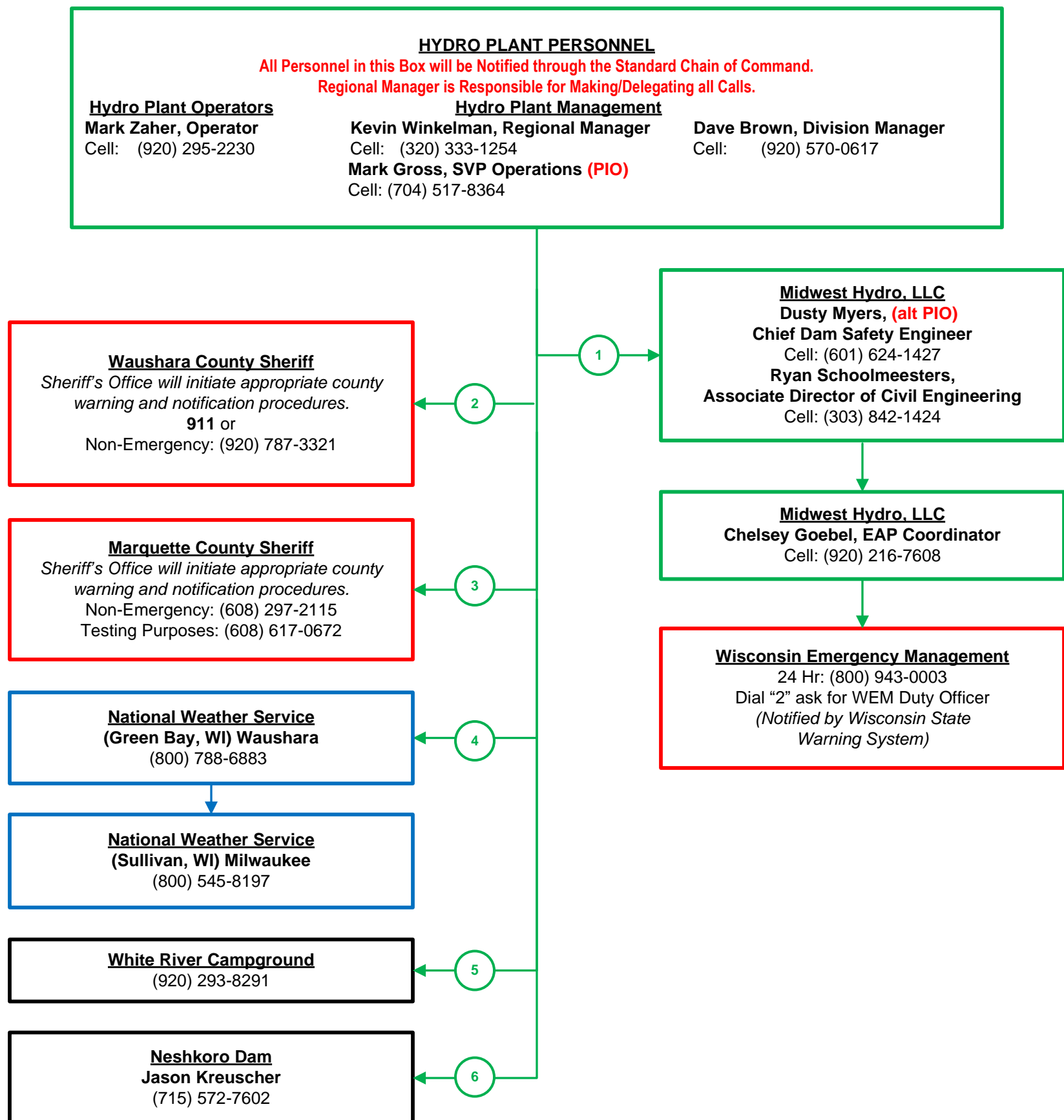
STATE PROJECT #: 69.12, NID # WI00058

Licensee: Midwest Hydro, LLC Address: W7313 County YY, Wautoma, WI 54982 County: Waushara River: White River Powerhouse: (920) 293-8293

## HIGH-FLOW NOTIFICATION FLOWCHART

**High-Flow Condition** The High-Flow condition level indicates that flooding is occurring on the river system, but there is no apparent threat to the integrity of the dam. The High-Flow emergency level is used by the licensee to convey to outside agencies that downstream areas may be affected by the dam's release. Although the amount of flooding may be beyond the control of the licensee, information on the timing and amount of release from the dam may be helpful to authorities in making decisions regarding warnings and evacuations.

Water levels reaching 2 inches on the gauge in the powerhouse will result in overtopping of the retaining wall on the reservoir.  
Water levels reaching 5 inches on the gauge inside the powerhouse will result in significant flooding for the White River Campground.



**Legend**

- Green = Licensee Responders
- Red = Emergency Responders
- Blue = Government Agencies
- Black = Downstream Dams & Other Stakeholders

Revised: October 2022

Contains Critical Energy  
Infrastructure Information  
-Do Not Release-

## CUI//CEII

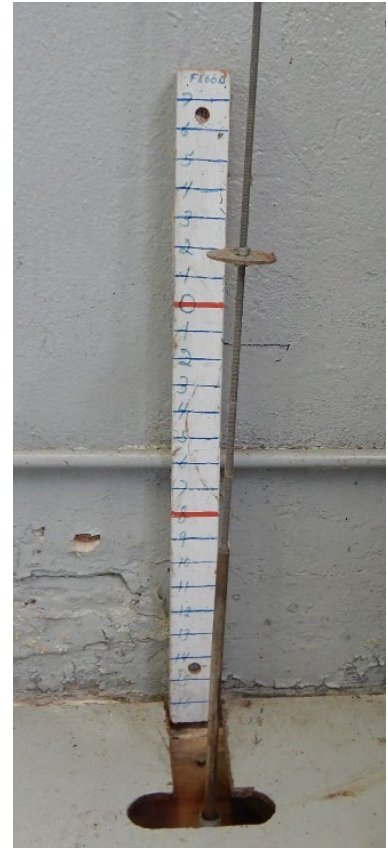
If an incident is reported by a public observer, dispatch is responsible to contact the Hydro Plant Operators to verify the determination of the emergency level.

After the emergency level has been determined, notifications shall be made in accordance with the EAP's notification flowcharts immediately. Figure E-3 provides guidance on message delivery and other information. Figure E-4 provides examples of pre-scripted messages.

**High Flow Operations:** Normal water flows are measured around -2 inches on the gauge inside the powerhouse. When water levels on the gauge read 2 inches, the retaining wall of the impound will see overtopping. When river flows reach 5 inches on the gauge inside of the powerhouse, the on-site Hydro Plant Operators are responsible to contact the White River Campground immediately upstream to alert them to the significant flooding of the low-lying areas of the campground. The county campground is advised to begin evacuation and closure if river flows are predicted to cause dam failure. Patrons that are swimming or recreating in the impoundment should be asked to return to their campsite.

Hydro Plant Operators should continue daily communications with operations management and the Chief Dam Safety Engineer during High Flow conditions.

**Non-Failure Condition:** Requires investigation and notification of internal and possibly external personnel Hydro Plant Operators are responsible to notify Hydro Plant Management and the Chief Dam Safety Engineer and if it is necessary to make external notifications. Provide the following information when describing the Non-Failure condition:



The following information should be provided during the notification of a Non-Failure situation (see Figure E-2 for more information reference determining the emergency level):

1. Explain how much flow the dam is currently passing, and the timing and amount of project flows.
2. State that the dam is ***NOT*** in danger of failing.
3. Indicate when you will give the next status report.
4. Indicate who can be called for follow-up questions.

**Potential Failure:** Hydro Plant Operators will implement steps to initially assess and reduce impacts of the developing Potential Failure condition. Hydro Plant Operators shall immediately contact Hydro Plant Management and the Chief Dam Safety Engineer to aid, if appropriate then proceed with the notification. The following information should be



## CUI//CEII

equipment can be provided by private contractors under contract with Midwest Hydro, LLC.

**Imminent Failure:** If failure is imminent, this will result in rapid depletion of the reservoir and/or uncontrolled downstream flooding creating a hazard to public health, welfare and structures. This emergency level indicates dangerous high-speed, high volume flood waters are likely to occur in the river and flood-prone areas below the dam. This emergency level can either be determined through observation or from monitoring of sudden water elevation changes. The County YY Bridge and the Czech Lane Bridge will begin to flood and should be closed by emergency management personnel. The floodwave is expected to reach this bridge 40 minutes after failure occurs with the river reaching its highest elevation 60 minutes after failure occurs. The flood wave would take about 2.5 hours to reach the Neshkoro Dam with the peak flood levels arriving in 4.5 hours.

Once a decision is made that there is no time to prevent failure, the Imminent Failure warning must be used. For the purposes of evacuation, Emergency Management Authorities should assume the worst-case condition that failure has already occurred.

The following information should be provided during notification of an Imminent Failure situation:

1. Explain that the dam is failing, is about to fail, or has failed.
2. State you are determining this to be an ***IMMINENT FAILURE***.
3. Refer to the inundation maps and explain what downstream areas are at risk from a dam failure and estimate when flows should reach critical downstream areas.
4. Indicate when you will give the next status report.
5. Indicate who can be called for any follow-up questions.

### **Hydro Plant Operator's Notification and Communication Responsibilities**

Hydro Plant Operators will implement steps immediately to notify and reduce impacts of the condition. Hydro Plant Operators shall immediately contact the following people in order:

1. Waushara County Sheriff
2. Marquette County Sheriff
3. National Weather Service
4. White River Campground
5. Neshkoro Dam
6. Licensee's Chief Dam Safety Engineer

### **Licensee's Dam Safety Team Notification and Communication Responsibilities**

The Licensee's Dam Safety Team makes the following notifications as listed on the notification flowchart:

1. Wisconsin Emergency Management



## CUI//CEII

Once notified, the Chief Dam Safety Engineer will work with Hydro Plant Operators and other appropriate management personnel at the dam and determine a course of action to respond to and control the potential emergency condition.

Hydro Plant Operators will implement actions, as appropriate, to increase or decrease water flows in order to mitigate negative impacts and make necessary repairs. Hydro Plant Management will make and/or supervise emergency repairs. If additional crews or equipment are required, Hydro Plant Operators may contact the Waushara County Sheriff's office to help or assist with contractor mobilization. Hartwig Excavating Inc. has construction equipment located approximately 5.2 miles south of the site. Additional equipment can be provided by private contractors under contract with Midwest Hydro, LLC.

### **News Media Notification**

During an emergency condition, the Waushara and Marquette County Emergency Management offices will be responsible for distributing emergency condition information and issuing press releases to ensure accurate and timely information to the public. During an emergency, all emergency condition information to the news or media will be handled through the Waushara and Marquette County Sheriff's offices. During an emergency condition, Lower White River Hydroelectric personnel are prohibited from discussing dam-specific or emergency condition information with the news media unless authorized to do so by the Licensee's Chief Dam Safety Engineer or the Licensee's Senior Vice President of Operations. A designated Public Information Officer will be appointed by the Licensee during a declared condition to provide technical information to the Waushara and Marquette County Sheriff's offices. The Public Information Officer is designated on the notification flowcharts.

### **Evacuation Responsibilities**

Although no homes or structures are located within the inundation areas downstream of this project, it is the responsibility of local Emergency Management Authorities and the Waushara County emergency response team to coordinate the evacuation of the public during an emergency incident. Warnings, closures and evacuation planning and implementation are the responsibilities of the Waushara County Emergency Services and/or the Marquette County Emergency Services.

Hydro Plant Operators, the Chief Dam Safety Engineer, and Hydro Plant Management in coordination with the Emergency Management Authorities may, if necessary, notify people in immediate danger, and/or anyone in the vicinity of the dam.

### **Monitoring, Security, Termination and Follow-up Responsibilities**

The Licensee will designate onsite monitor(s) from the beginning of the dam safety incident until the emergency has been terminated. The onsite monitors will provide status updates to Hydro Plant Management, the Chief Dam Safety Engineer and all other stakeholders.

## CUI//CEII

During a declared condition, public access to the project lands may be suspended for public safety reasons. The Hydro Plant Operator will coordinate public access restrictions with the Waushara County Sheriff's Office. Security on project land will be enforced by the Waushara County Sheriff's Office.

The hydro plant personnel in charge of emergency operations at the dam shall upon consultation with appropriate local, state, and federal representatives, authorize the termination of an emergency condition at the dam.

Termination of an alert signifies that certain dam operations have been reached and are expected to remain within normal operation parameters. Local and state emergency management officials are responsible for termination of all other emergency response activities. Public emergency response activities may be required to remain in effect for an unspecified time after an emergency condition at the dam has been terminated.

### **EAP Coordinator Responsibilities**

The EAP Coordinator works closely with the Chief Dam Safety Engineer and is familiar with all standard and site-specific practices, procedures, and concepts found within this EAP. The EAP Coordinator is responsible for all EAP maintenance and updates to ensure appropriate procedures are in place for swift, accurate notification and response during an emergency. Additionally, the EAP Coordinator is responsible for the following:

- Filing annual EAP updates and status reports
- Ensuring that all Hydro Plant Operators and Hydro Plant Management have received annual EAP training and have sufficient understanding of the EAP
- Performing public EAP training, as necessary
- Coordinating with operations staff and local emergency responders to schedule and conduct EAP exercises and drills
- Providing support to local emergency management during emergencies
- Ensuring annual inundation zone assessments are conducted to verify hazard classification and appropriate EAP measures

The EAP Coordinator responsible for implementing, updating, training, coordinating tests and serving as contact person for questions regarding this EAP is:

Ms. Chelsey Goebel, EAP Coordinator  
Licensee/Exemptee: Midwest Hydro, LLC  
7315 Wisconsin Avenue, Suite 1100W Bethesda, MD 20814  
Office: (920) 293-4628 ext. 346, Cell: (920) 216-7608  
Email: [chelsey.goebel@eaglecreekre.com](mailto:chelsey.goebel@eaglecreekre.com)

# White River Hydroelectric Project

## Emergency Notification Flowchart Distribution List

WI STATE 69.12, NID #: WI00058

Registered Copies & Additional Flowcharts	Organization	Person Receiving Copy
(4) #1-#4*	Midwest Hydro, LLC	Mark Zaher, Operator 720 East Berlin Street Neshkoro, WI 54960 <a href="mailto:Mark.zaher@eaglecreekre.com">Mark.zaher@eaglecreekre.com</a>
#5*	Midwest Hydro, LLC	Kevin Winkelman, Regional Manager 105 Sartell Street East Sartell, MN 56377 <a href="mailto:Kevin.winkelman@eaglecreekre.com">Kevin.winkelman@eaglecreekre.com</a>
Elec.	Midwest Hydro, LLC	Dave Brown, Division Manager <a href="mailto:Dave.brown@eaglecreekre.com">Dave.brown@eaglecreekre.com</a>
Elec.	Midwest Hydro, LLC	Dusty Myers, Chief Dam Safety Engineer <a href="mailto:Dusty.myers@eaglecreekre.com">Dusty.myers@eaglecreekre.com</a>
Elec.	Midwest Hydro, LLC	Ryan Schoolmeesters, Associate Director of Civil Engineering <a href="mailto:Ryan.schoolmeesters@eaglecreekre.com">Ryan.schoolmeesters@eaglecreekre.com</a>
#6*  Elec.	Midwest Hydro, LLC	Chelsey Goebel, EAP Coordinator P.O. Box 167, 116 North State Street Neshkoro, WI 54960-0167 <a href="mailto:Chelsey.goebel@eaglecreekre.com">Chelsey.goebel@eaglecreekre.com</a>
#7  Elec.	Marquette County Sheriff	Attn: Lieutenant Aaron Williams 67 West Park Street P.O. Box 630 Montello, WI 53949 Cell: (608) 617-0672 <a href="mailto:Awilliams@co.marquette.wi.us">Awilliams@co.marquette.wi.us</a>
#8*	Neshkoro Fire Department	Attn: Fire Chief Thomas Krueger P.O. Box 135 Neshkoro, WI 54960
#9-11	Waushara County Sheriff	Attn: Sheriff Wally Zuelke Attn: Ryan McElroy, Lt of Communications Attn: Allen Luchini Director of Emergency Management Waushara County Office (920)787-0468 Cell (920)229-3911 EOC (920) 293-1312 430 East Division Street Wautoma, WI 54982

\* = Requested Hard Copy

# White River Hydroelectric Project

## Emergency Notification Flowchart Distribution List

WI STATE 69.12, NID #: WI00058

Registered Copies & Additional Flowcharts	Organization	Person Receiving Copy
Elec.		<a href="mailto:Wcem@co.waushara.wi.us">Wcem@co.waushara.wi.us</a> <a href="mailto:Norman.Duesterhoeft@co.waushara.wi.us">Norman.Duesterhoeft@co.waushara.wi.us</a> <a href="mailto:allen.luchini@co.waushara.wi.us">allen.luchini@co.waushara.wi.us</a> <a href="mailto:Ryan.McElroy@co.waushara.wi.us">Ryan.McElroy@co.waushara.wi.us</a>
#12  Elec.	Wisconsin Department of Emergency Management – East Central Region	Attn: Steve Fenske, Director 851 South Rolling Meadows Drive Fond Du Lac, WI 54936 Phone: (920) 929-3730 Cell: (608) 516-5281 <a href="mailto:Steve.fenske@wisconsin.gov">Steve.fenske@wisconsin.gov</a>
#13*	Wautoma Fire Department	Attn: Fire Chief Larry Buntrock 568 South Fair Street Wautoma, WI 54982
Elec.	White River Flowage	Attn: Mike Geier, Chairman Attn: Lynn Bockenbauer W7529 White River Trail Wautoma, WI 54982 <a href="mailto:fmgeier@centurytel.net">fmgeier@centurytel.net</a> <a href="mailto:lynniebo@gmail.com">lynniebo@gmail.com</a>
#14  Elec.	WI DNR	Tanya L. Lourigan, P.E. Dam Safety & Floodplain Mapping Section Chief – Waterways/External Services 101 S. Webster Street, Box 7921 Madison, WI 53707-7921 Cell Phone: (608) 444-2089 <a href="mailto:Tanya.Lourigan@wisconsin.gov">Tanya.Lourigan@wisconsin.gov</a> <a href="mailto:Dnrdamsafety@wisconsin.gov">Dnrdamsafety@wisconsin.gov</a>
#15  Elec.	WI DNR	Attn: Hanna Johnson, Dam Safety Engineer 473 Griffith Avenue Wisconsin Rapids, WI 54494 (715) 421-9940 <a href="mailto:Hanna.johnson@wisconsin.gov">Hanna.johnson@wisconsin.gov</a>
	National Weather Service	Attn: Sarah Marquardt, Senior Service Hydrologist Attn: Kurt Kotenberg 2485 South Point Road Green Bay, WI 54313 <a href="mailto:Sarah.marquardt@noaa.gov">Sarah.marquardt@noaa.gov</a>

\* = Requested Hard Copy

**White River Hydroelectric Project  
Emergency Notification Flowchart Distribution List**

**WI STATE 69.12, NID #: WI00058**

Registered Copies & Additional Flowcharts	Organization	Person Receiving Copy
Elec. #16*		<a href="mailto:Keith.cooley@noaa.gov">Keith.cooley@noaa.gov</a> <a href="mailto:kurt.kotenberg@noaa.gov">kurt.kotenberg@noaa.gov</a> <a href="mailto:Roy.eckberg@noaa.gov">Roy.eckberg@noaa.gov</a>
	White River Campground	W7311 County Road YY Wautoma, WI 54982
Elec.	Renewable World Energies (Neshkoro Millpond Dam)	Attn: Jason Kreuzscher 100 State Street P.O. Box 264 Neshkoro WI 54960 <a href="mailto:Jason@rwehydro.com">Jason@rwehydro.com</a>

\* = Requested Hard Copy

### Available Resources Chart

Resource	Provider/Supplier Name	Address	Phone Number Email Address	Estimated Response Time	Notes <small>(e.g., type of equipment, estimated quantity of material, etc.)</small>
Heavy Equipment Service and Rental (South of Dam)	Hartwig Excavating, Inc	615 WI-73 Neshkoro, WI 54960	Greg (920) 295-2338 (920) 293-4550	1 hr	Confirmed for gravel, tractors, back-ho use, dump trucks, rubber tire loader, skid steerer, no excavator onsite
Sand and Gravel (North of Dam)	Kelley Sand & Gravel	N2838 17 <sup>th</sup> Drive Wautoma, WI 54982	Adam Kelley (920) 765-0221 (920) 787-2230	1 hr	6,000-10,000 sandbags loaded and ready to be delivered at all times, Confirmed for emergency sand and gravel delivery
Sand and Gravel (East of Dam)	Brookstone, Inc	5223 Rushford Ave Omro, WI	Randi Brooks (920) 420-2634	2 hrs	Confirmed contact for emergency sand and gravel delivery
Concrete (North of Dam)	Lycon, Inc. <small>(Wisconsin Valley Concrete)</small>	N2846 17 <sup>th</sup> Drive Wautoma, WI 54982	Jay North (715) 421-6978 1-800-955-7702	3 hrs	Confirmed for Concrete Delivery